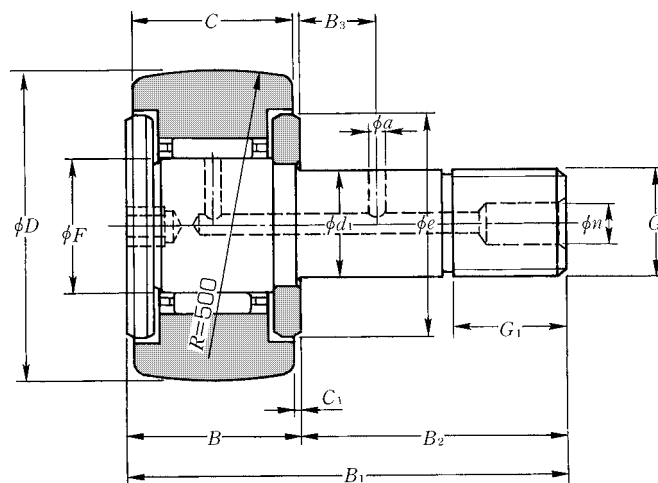
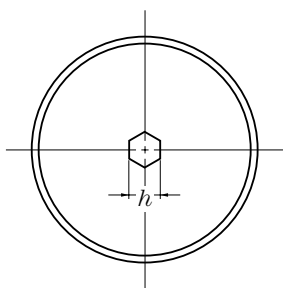


|                  |                        |                      |
|------------------|------------------------|----------------------|
| Metric series    | Inch series            |                      |
| With cage        | Full-complement roller |                      |
| Hexagonal socket | Tapped hole            | Slot for screwdriver |
| Without seal     | With seal              |                      |
| ミリ系              | インチ系                   |                      |
| 保持器付             | 総ころ                    |                      |
| 六角穴              | タップ穴                   | ドライバ溝                |
| シールなし            | シール付                   |                      |

## Cam Followers with Cage

保持器付カムフォロア

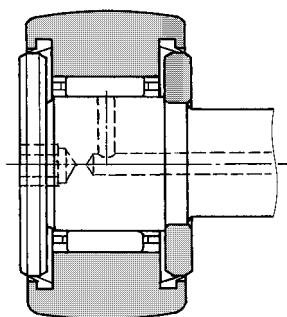


CR··H type (with cage)

CR··H形 (保持器付)

| OD <sup>1)</sup><br>外径<br>mm (in)<br>D<br>0<br>-0.05 | Cam Follower number<br>呼び番号   |                                 |                               |                                 | Dimensions<br>寸法<br>mm (in) |                |    |      |                |                |             |
|--|-------------------------------|---------------------------------|-------------------------------|---------------------------------|-----------------------------|----------------|----|------|----------------|----------------|-------------|
|  | Without seal<br>シールなし         |                                 | With seal<br>シール有り            |                                 | $d_1^{+0.025}_0$            | $C_{-0.130}^0$ | F  | B    | B <sub>1</sub> | B <sub>2</sub> | G           |
|  | Spherical outer rings<br>球面外輪 | Cylindrical outer rings<br>円筒外輪 | Spherical outer rings<br>球面外輪 | Cylindrical outer rings<br>円筒外輪 |                             |                |    |      |                |                |             |
| 12.700 (1/2)   | CR8T2H/3AS                    | CR8XT2H/3AS                     | —                             | —                               | 4.762 (3/8)                 | 8.731 (1 1/32) | 6  | 10.3 | 23             | 12.7           | NO-10-32UNF |
| 12.700 (1/2)   | CR8-1T2H/3AS                  | CR8-1XT2H/3AS                   | —                             | —                               | 4.762 (3/8)                 | 9.525 (3/8)    | 6  | 11.1 | 27             | 15.9           | NO-10-32UNF |
| 15.875 (5/8)   | CR10H/3AS                     | CR10XH/3AS                      | —                             | —                               | 6.350 (1/4)                 | 10.319 (13/32) | 8  | 11.9 | 27.8           | 15.9           | 1/4-28UNF   |
| 15.875 (5/8)   | CR10-1H/3AS                   | CR10-1XH/3AS                    | CR10-1LLH/3AS                 | CR10-1XLLH/3AS                  | 6.350 (1/4)                 | 11.112 (7/16)  | 8  | 12.7 | 31.8           | 19.1           | 1/4-28UNF   |
| 19.050 (3/4)   | CR12H                         | CR12XH                          | CR12LLH/3AS                   | CR12XLLH/3AS                    | 9.525 (3/8)                 | 12.700 (1/2)   | 12 | 14.3 | 36.5           | 22.2           | 3/8-24UNF   |
| 22.225 (7/8)   | CR14H                         | CR14XH                          | CR14LLH/3AS                   | CR14XLLH/3AS                    | 9.525 (3/8)                 | 12.700 (1/2)   | 12 | 14.3 | 36.5           | 22.2           | 3/8-24UNF   |
| 25.400 (1)   | CR16H                         | CR16XH                          | CRV16LLH/3AS                  | CR16XLLH/3AS                    | 11.112 (7/16)               | 15.875 (5/8)   | 13 | 17.4 | 42.8           | 25.4           | 7/16-20UNF  |
| 28.575 (1 1/8)                                       | CR18H                         | CR18XH                          | CR18LLH/3AS                   | CR18XLLH/3AS                    | 11.112 (7/16)               | 15.875 (5/8)   | 13 | 17.4 | 42.8           | 25.4           | 7/16-20UNF  |
| 31.750 (1 1/4)                                       | CR20H                         | CR20XH                          | CR20LLH/3AS                   | CR20XLLH/3AS                    | 12.700 (1/2)                | 19.050 (3/4)   | 16 | 20.6 | 52.4           | 31.8           | 1/2-20UNF   |
| 34.925 (1 3/8)                                       | CR22H                         | CR22XH                          | CR22LLH/3AS                   | CR22XLLH/3AS                    | 12.700 (1/2)                | 19.050 (3/4)   | 16 | 20.6 | 52.4           | 31.8           | 1/2-20UNF   |
| 38.100 (1 1/2)                                       | CR24H                         | CR24XH                          | CR24LLH/3AS                   | CR24XLLH/3AS                    | 15.875 (5/8)                | 22.225 (7/8)   | 20 | 23.8 | 61.9           | 38.1           | 5/8-18UNF   |
| 41.275 (1 5/8)                                       | CR26H                         | CR26XH                          | CR26LLH/3AS                   | CR26XLLH/3AS                    | 15.875 (5/8)                | 22.225 (7/8)   | 20 | 23.8 | 61.9           | 38.1           | 5/8-18UNF   |
| 44.450 (1 3/4)                                       | CR28H                         | CR28XH                          | CR28LLH/3AS                   | CR28XLLH/3AS                    | 19.050 (3/4)                | 25.400 (1)     | 25 | 27   | 71.4           | 44.4           | 3/4-16UNF   |
| 47.625 (1 7/8)                                       | CR30H                         | CR30XH                          | CR30LLH/3AS                   | CR30XLLH/3AS                    | 19.050 (3/4)                | 25.400 (1)     | 25 | 27   | 71.4           | 44.4           | 3/4-16UNF   |
| 50.800 (2)   | CR32H                         | CR32XH                          | CR32LLH/3AS                   | CR32XLLH/3AS                    | 22.225 (7/8)                | 31.750 (1 1/4) | 30 | 33.3 | 84.1           | 50.8           | 7/8-14UNF   |
| 57.150 (2 1/4)                                       | CR36H                         | CR36XH                          | CR36LLH/3AS                   | CR36XLLH/3AS                    | 22.225 (7/8)                | 31.750 (1 1/4) | 30 | 33.3 | 84.1           | 50.8           | 7/8-14UNF   |

Note: 1.  $0_{-0.025}$  is the dimensional tolerance of the outside diameter  $D$  of the outer rings of the CR··XH and CR··XLLH types whose outside surface form is cylindrical.  
 注1) 外径面が円筒であるCR··XH形、CR··XLLH形の外輪外径  $D$  の許容差は  $0_{-0.025}$  である。



**CR·LLH type (with cage, sealed)**  
CR·LLH形 (保持器付シール形)

Accessories / 付属部品

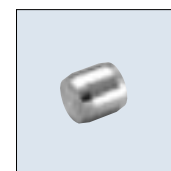
| Applicable bearing number<br>適用軸受 呼び番号 | Grease nipple number<br>グリースニップル 呼び番号 | Plug number<br>プラグ 呼び番号 | Applicable hexagonal nut<br>適用六角ナット |
|--|---------------------------------------|-------------------------|-------------------------------------|
| 8,8-1                                  | NIP-B3                                | SEN3                    | No. 10 32UNF                        |
| 10~18                                  | NIP-B4                                | SEN4                    | 1/4-28UNF~7/16-20UNF                |
| 20~36                                  | NIP-B6                                | SEN6                    | 1/2-20UNF~7/8-14UNF                 |

Note: The boundary dimensions of the grease nipples and plugs are listed in Table 3 on page 9 and Table 5 on page 10.

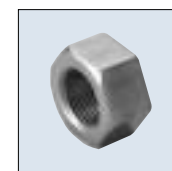
※グリースニップル及びプラグの主要寸法は9ページ表3、10ページ表5に示す。



NIP-B6



SEN6



1/2-20UNF

| Dimensions<br>寸法<br>mm |                |                |   |   |      |      | Basic load ratings<br>dynamic static<br>基本動 N 基本静<br>定格荷重 kgf 定格荷重 |                 | Track load capacity<br>トラック負荷容量<br>N<br>kgf |                                   | Limiting speed<br>許容回転速度<br>r/min |                           | Maximum<br>tightening<br>torque<br>締付最大トルク<br>N·m<br>kgf·m | Mass<br>質量<br>kg<br>(approx.)<br>(参考) | Stud dia.<br>スタッド径<br>mm (in) |
|------------------------|----------------|----------------|---|---|------|------|--|-----------------|---|-----------------------------------|-----------------------------------|---------------------------|--|---------------------------------------|-------------------------------|
| G <sub>1</sub>         | B <sub>3</sub> | C <sub>1</sub> | n | a | e    | in   | C <sub>r</sub>   | C <sub>or</sub> | Spherical<br>outer ring<br>球面外輪             | Cylindrical<br>outer ring<br>円筒外輪 | Grease<br>lubrication<br>グリース潤滑   | Oil<br>lubrication<br>油潤滑 |  |                                       |                               |
| 6.4                    | —              | 0.8            | — | — | 10   | 1/8  | 2 820<br>287   | 2 450<br>250    | 790<br>81                                   | 2 090<br>213                      | 20 000                            | 28 000                    | 2<br>0.2   | 0.009                                 | 4.762 (3/16)                  |
| 6.4                    | —              | 0.8            | — | — | 10   | 1/8  | 2 820<br>287   | 2 450<br>250    | 790<br>81                                   | 2 310<br>235                      | 20 000                            | 28 000                    | 2<br>0.2   | 0.010                                 | 4.762 (3/16)                  |
| 7.9                    | —              | 0.8            | — | — | 12.5 | 1/8  | 4 050<br>415   | 4 000<br>405    | 1 080<br>110                                | 3 000<br>310                      | 18 000                            | 25 000                    | 4<br>0.4   | 0.020                                 | 6.350 (1/4)                   |
| 7.9                    | —              | 0.8            | — | — | 12.5 | 1/8  | 4 050<br>415   | 4 000<br>405    | 1 080<br>110                                | 3 300<br>335                      | *18 000                           | *25 000                   | 4<br>0.4   | 0.022                                 | 6.350 (1/4)                   |
| 9.5                    | 6.35           | 0.8            | 4 | 3 | 16.5 | 3/16 | 5 300<br>540   | 6 650<br>680    | 1 380<br>140                                | 4 600<br>470                      | *13 000                           | *16 000                   | 13<br>1.3  | 0.037                                 | 9.525 (3/8)                   |
| 9.5                    | 6.35           | 0.8            | 4 | 3 | 16.5 | 3/16 | 5 300<br>540   | 6 650<br>680    | 1 710<br>174                                | 5 350<br>545                      | *13 000                           | *16 000                   | 13<br>1.3  | 0.048                                 | 9.525 (3/8)                   |
| 12.7                   | 6.35           | 0.8            | 4 | 3 | 21   | 1/4  | 7 250<br>740   | 8 350<br>850    | 2 060<br>210                                | 7 400<br>755                      | *12 000                           | *15 000                   | 18<br>1.9  | 0.087                                 | 11.112 (7/16)                 |
| 12.7                   | 6.35           | 0.8            | 4 | 3 | 21   | 1/4  | 7 250<br>740   | 8 350<br>850    | 2 430<br>248                                | 8 350<br>850                      | *12 000                           | *15 000                   | 18<br>1.9  | 0.100                                 | 11.112 (7/16)                 |
| 15.9                   | 7.94           | 0.8            | 6 | 3 | 25   | 1/4  | 11 400<br>1 160  | 15 900<br>1 620 | 2 840<br>290                                | 11 400<br>1 160                   | 9 000                             | *13 000                   | 24<br>2.4  | 0.150                                 | 12.700 (1/2)                  |
| 15.9                   | 7.94           | 0.8            | 6 | 3 | 25   | 1/4  | 11 400<br>1 160  | 15 900<br>1 620 | 3 250<br>330                                | 12 500<br>1 280                   | 9 000                             | *13 000                   | 24<br>2.4  | 0.166                                 | 12.700 (1/2)                  |
| 19.1                   | 9.53           | 0.8            | 6 | 4 | 30   | 5/16 | 13 300<br>1 360  | 20 100<br>2 120 | 3 600<br>365                                | 16 300<br>1 660                   | 7 500                             | 10 000                    | 51<br>5.2  | 0.225                                 | 15.875 (5/8)                  |
| 19.1                   | 9.53           | 0.8            | 6 | 4 | 30   | 5/16 | 13 300<br>1 360  | 20 100<br>2 120 | 4 050<br>410                                | 17 600<br>1 800                   | 7 500                             | 10 000                    | 51<br>5.2  | 0.265                                 | 15.875 (5/8)                  |
| 22.2                   | 11.11          | 0.8            | 6 | 4 | 36.5 | 5/16 | 20 700<br>2 110  | 33 500<br>3 450 | 4 400<br>450                                | 21 600<br>2 200                   | 6 000                             | 8 000                     | 92<br>9.3  | 0.375                                 | 19.050 (3/4)                  |
| 22.2                   | 11.11          | 0.8            | 6 | 4 | 36.5 | 5/16 | 20 700<br>2 110  | 33 500<br>3 450 | 4 850<br>495                                | 23 200<br>2 360                   | 6 000                             | 8 000                     | 92<br>9.3  | 0.420                                 | 19.050 (3/4)                  |
| 25.4                   | 12.7           | 0.8            | 8 | 5 | 42   | 7/16 | 28 900<br>2 950  | 55 000<br>5 600 | 5 300<br>540                                | 31 000<br>3 150                   | 5 000                             | 6 600                     | 150<br>15  | 0.505                                 | 22.225 (7/8)                  |
| 25.4                   | 12.7           | 0.8            | 8 | 5 | 42   | 7/16 | 28 900<br>2 950  | 55 000<br>5 600 | 6 200<br>635                                | 35 000<br>3 550                   | 5 000                             | 6 600                     | 150<br>15  | 0.750                                 | 22.225 (7/8)                  |

Note: The limiting speed of cam followers incorporating a seal (those marked with an asterisk) is approximately 10,000 rpm.  
備考※印シール有りの場合の許容回転速度はおおよそ10 000r/minである。

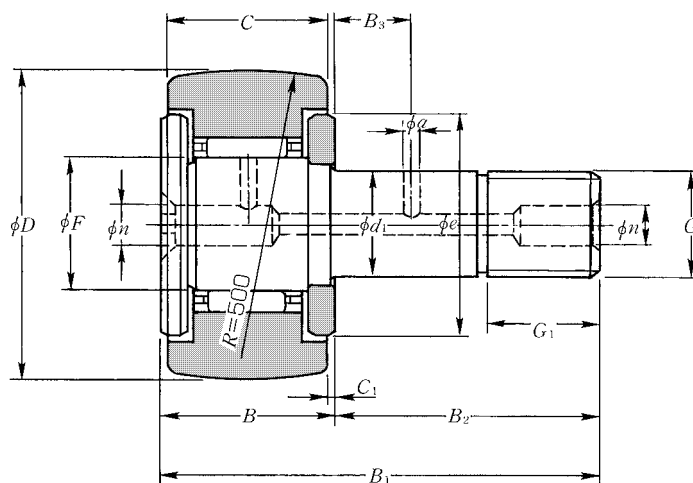
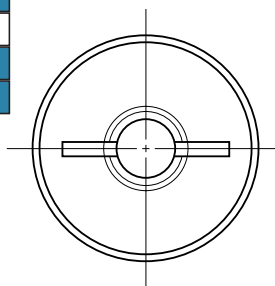
|                  |                        |                      |
|------------------|------------------------|----------------------|
| Metric series    | Inch series            |                      |
| With cage        | Full-complement roller |                      |
| Hexagonal socket | Tapped hole            | Slot for screwdriver |
| Without seal     | With seal              |                      |
| ミリ系              | インチ系                   |                      |
| 保持器付             | 総ころ                    |                      |
| 六角穴              | タップ穴                   | ドライバ溝                |
| シールなし            | シール付                   |                      |

## Cam Followers with Cage

保持器付カムフォロア

CR type  
CR··X type  
CR··LL type  
CR··XLL type

CR形  
CR··X形  
CR··LL形  
CR··XLL形



CR type (with cage)  
CR形 (保持器付)

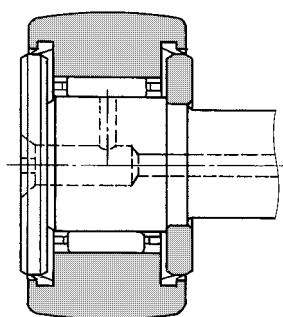
| OD <sup>1)</sup><br>外径<br>mm (in)<br>D<br>0<br>-0.05 | Cam Follower number<br>呼び番号   |                                 |                               |                                 | Dimensions<br>寸法<br>mm (in) |                |    |      |                |                |             |
|--|-------------------------------|---------------------------------|-------------------------------|---------------------------------|-----------------------------|----------------|----|------|----------------|----------------|-------------|
|  | Without seal<br>シールなし         |                                 | With seal<br>シール有り            |                                 | $d_1^{+0.025}_0$            | $C_{-0.130}^0$ | F  | B    | B <sub>1</sub> | B <sub>2</sub> | G           |
|  | Spherical outer rings<br>球面外輪 | Cylindrical outer rings<br>円筒外輪 | Spherical outer rings<br>球面外輪 | Cylindrical outer rings<br>円筒外輪 |                             |                |    |      |                |                |             |
| 12.700 (1/2)   | CR8T2                         | CR8XT2                          | —                             | —                               | 4.762 (3/8)                 | 8.731 (1 1/32) | 6  | 10.3 | 23             | 12.7           | NO-10-32UNF |
| 12.700 (1/2)   | CR8-1T2                       | CR8-1XT2                        | —                             | —                               | 4.762 (3/8)                 | 9.525 (3/8)    | 6  | 11.1 | 27             | 15.9           | NO-10-32UNF |
| 15.875 (5/8)   | CR10                          | CR10X                           | —                             | —                               | 6.350 (1/4)                 | 10.319 (13/32) | 8  | 11.9 | 27.8           | 15.9           | 1/4-28UNF   |
| 15.875 (5/8)   | CR10-1                        | CR10-1X                         | CR10-1LL/3AS                  | CR10-1XLL/3AS                   | 6.350 (1/4)                 | 11.112 (7/16)  | 8  | 12.7 | 31.8           | 19.1           | 1/4-28UNF   |
| 19.050 (3/4)   | CR12                          | CR12X                           | CR12LL/3AS                    | CR12XLL/3AS                     | 9.525 (3/8)                 | 12.700 (1/2)   | 12 | 14.3 | 36.5           | 22.2           | 3/8-24UNF   |
| 22.225 (7/8)   | CR14                          | CR14X                           | CR14LL/3AS                    | CR14XLL/3AS                     | 9.525 (3/8)                 | 12.700 (1/2)   | 12 | 14.3 | 36.5           | 22.2           | 3/8-24UNF   |
| 25.400 (1)   | CR16                          | CR16X                           | CRV16LL/3AS                   | CR16XLL/3AS                     | 11.112 (7/16)               | 15.875 (5/8)   | 13 | 17.4 | 42.8           | 25.4           | 7/16-20UNF  |
| 28.575 (1 1/8)                                       | CR18                          | CR18X                           | CR18LL/3AS                    | CR18XLL/3AS                     | 11.112 (7/16)               | 15.875 (5/8)   | 13 | 17.4 | 42.8           | 25.4           | 7/16-20UNF  |
| 31.750 (1 1/4)                                       | CR20                          | CR20X                           | CR20LL/3AS                    | CR20XLL/3AS                     | 12.700 (1/2)                | 19.050 (3/4)   | 16 | 20.6 | 52.4           | 31.8           | 1/2-20UNF   |
| 34.925 (1 3/8)                                       | CR22                          | CR22X                           | CR22LL/3AS                    | CR22XLL/3AS                     | 12.700 (1/2)                | 19.050 (3/4)   | 16 | 20.6 | 52.4           | 31.8           | 1/2-20UNF   |
| 38.100 (1 1/2)                                       | CR24                          | CR24X                           | CR24LL/3AS                    | CR24XLL/3AS                     | 15.875 (5/8)                | 22.225 (7/8)   | 20 | 23.8 | 61.9           | 38.1           | 5/8-18UNF   |
| 41.275 (1 5/8)                                       | CR26                          | CR26X                           | CR26LL/3AS                    | CR26XLL/3AS                     | 15.875 (5/8)                | 22.225 (7/8)   | 20 | 23.8 | 61.9           | 38.1           | 5/8-18UNF   |
| 44.450 (1 3/4)                                       | CR28                          | CR28X                           | CR28LL/3AS                    | CR28XLL/3AS                     | 19.050 (3/4)                | 25.400 (1)     | 25 | 27   | 71.4           | 44.4           | 3/4-16UNF   |
| 47.625 (1 7/8)                                       | CR30                          | CR30X                           | CR30LL/3AS                    | CR30XLL/3AS                     | 19.050 (3/4)                | 25.400 (1)     | 25 | 27   | 71.4           | 44.4           | 3/4-16UNF   |
| 50.800 (2)   | CR32                          | CR32X                           | CR32LL/3AS                    | CR32XLL/3AS                     | 22.225 (7/8)                | 31.750 (1 1/4) | 30 | 33.3 | 84.1           | 50.8           | 7/8-14UNF   |
| 57.150 (2 1/4)                                       | CR36                          | CR36X                           | CR36LL/3AS                    | CR36XLL/3AS                     | 22.225 (7/8)                | 31.750 (1 1/4) | 30 | 33.3 | 84.1           | 50.8           | 7/8-14UNF   |

Notes: 1.  $0_{-0.025}$  is the dimensional tolerance of the outside diameter  $D$  of the outer rings of the CR··X and CR··XLL types whose outside surface form is cylindrical.

2. The grease port is situated only in the front (in the left side face in the diagram above).

注1) 外径面が円筒であるCR··X形、CR··XLL形の外径  $D$  の許容差は  $0_{-0.025}$  である。

注2) グリースの補給穴は正面 (上図左側面) にだけ設けている。



**CR·LL type (with cage, sealed)**  
CR·LL形 (保持器付シール形)

**Accessories / 付属部品**

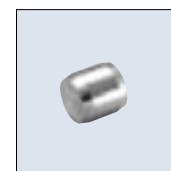
| Applicable bearing number<br>適用軸受 呼び番号 | Grease nipple number<br>グリースニップル 呼び番号 | Plug number<br>プラグ 呼び番号 | Applicable hexagonal nut<br>適用六角ナット |
|--|---------------------------------------|-------------------------|-------------------------------------|
| 8,8-1                                  | NIP-B3                                | SEN3                    | No. 10 32UNF                        |
| 10~18                                  | NIP-B4                                | SEN4                    | 1/4-28UNF~7/16 20UNF                |
| 20~36                                  | NIP-B6                                | SEN6                    | 1/2-20UNF~7/8 14UNF                 |

Note: The boundary dimensions of the grease nipples and plugs are listed in Table 3 on page 9 and Table 5 on page 10.

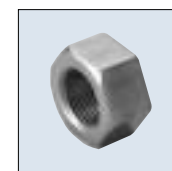
※グリースニップル及びプラグの主要寸法は9ページ表3、10ページ表5に示す。



NIP-B6



SEN6



1/2-20UNF

| Dimensions<br>寸法<br>mm (in) |                |                |                 |   |      | Basic load ratings<br>dynamic static<br>基本動 N 基本静<br>定格荷重 kgf 定格荷重 |                 | Track load capacity<br>トラック荷容量<br>N<br>Spherical outer ring 球面外輪 Cylindrical outer ring 円筒外輪 |                                | Limiting speed<br>許容回転速度<br>r/min<br>Grease lubrication グリース潤滑 Oil lubrication 油潤滑 |                        | Maximum tightening torque<br>締付最大トルク<br>N·m<br>kgf·m | Mass<br>質量<br>kg<br>(approx.)<br>(参考) | Stud dia.<br>スタッド径<br>mm (in) |
|-----------------------------|----------------|----------------|-----------------|---|------|--|-----------------|--|--------------------------------|--|------------------------|--|---------------------------------------|-------------------------------|
| G <sub>1</sub>              | B <sub>3</sub> | C <sub>1</sub> | n               | a | e    | C <sub>r</sub>   | C <sub>or</sub> | Spherical outer ring<br>球面外輪   | Cylindrical outer ring<br>円筒外輪 | Grease lubrication<br>グリース潤滑   | Oil lubrication<br>油潤滑 |  |                                       |                               |
| 6.4                         | —              | 0.8            | 3 <sup>2)</sup> | — | 10   | 2 820<br>287   | 2 450<br>250    | 790<br>81  | 2 090<br>213                   | 20 000   | 28 000                 | 2<br>0.2   | 0.009                                 | 4.762 (3/16)                  |
| 6.4                         | —              | 0.8            | 3 <sup>2)</sup> | — | 10   | 2 820<br>287   | 2 450<br>250    | 790<br>81  | 2 310<br>235                   | 20 000   | 28 000                 | 2<br>0.2   | 0.010                                 | 4.762 (3/16)                  |
| 7.9                         | —              | 0.8            | 4 <sup>2)</sup> | — | 12.5 | 4 050<br>415   | 4 000<br>405    | 1 080<br>110   | 3 000<br>310                   | 18 000   | 25 000                 | 4<br>0.4   | 0.020                                 | 6.350 (1/4)                   |
| 7.9                         | —              | 0.8            | 4 <sup>2)</sup> | — | 12.5 | 4 050<br>415   | 4 000<br>405    | 1 080<br>110   | 3 300<br>335                   | *18 000  | *25 000                | 4<br>0.4   | 0.022                                 | 6.350 (1/4)                   |
| 9.5                         | 6.35           | 0.8            | 4               | 3 | 16.5 | 5 300<br>540   | 6 650<br>680    | 1 380<br>140   | 4 600<br>470                   | *13 000  | *16 000                | 13<br>1.3  | 0.037                                 | 9.525 (3/8)                   |
| 9.5                         | 6.35           | 0.8            | 4               | 3 | 16.5 | 5 300<br>540   | 6 650<br>680    | 1 710<br>174   | 5 350<br>545                   | *13 000  | *16 000                | 13<br>1.3  | 0.048                                 | 9.525 (3/8)                   |
| 12.7                        | 6.35           | 0.8            | 4               | 3 | 21   | 7 250<br>740   | 8 350<br>850    | 2 060<br>210   | 7 400<br>755                   | *12 000  | *15 000                | 18<br>1.9  | 0.087                                 | 11.112 (7/16)                 |
| 12.7                        | 6.35           | 0.8            | 4               | 3 | 21   | 7 250<br>740   | 8 350<br>850    | 2 430<br>248   | 8 350<br>850                   | *12 000  | *15 000                | 18<br>1.9  | 0.100                                 | 11.112 (7/16)                 |
| 15.9                        | 7.94           | 0.8            | 6               | 3 | 25   | 11 400<br>1 160  | 15 900<br>1 620 | 2 840<br>290   | 11 400<br>1 160                | 9 000  | *13 000                | 24<br>2.4  | 0.150                                 | 12.700 (1/2)                  |
| 15.9                        | 7.94           | 0.8            | 6               | 3 | 25   | 11 400<br>1 160  | 15 900<br>1 620 | 3 250<br>330   | 12 500<br>1 280                | 9 000  | *13 000                | 24<br>2.4  | 0.166                                 | 12.700 (1/2)                  |
| 19.1                        | 9.53           | 0.8            | 6               | 4 | 30   | 13 300<br>1 360  | 20 100<br>2 120 | 3 600<br>365   | 16 300<br>1 660                | 7 500  | 10 000                 | 51<br>5.2  | 0.225                                 | 15.875 (5/8)                  |
| 19.1                        | 9.53           | 0.8            | 6               | 4 | 30   | 13 300<br>1 360  | 20 100<br>2 120 | 4 050<br>410   | 17 600<br>1 800                | 7 500  | 10 000                 | 51<br>5.2  | 0.265                                 | 15.875 (5/8)                  |
| 22.2                        | 11.11          | 0.8            | 6               | 4 | 36.5 | 20 700<br>2 110  | 33 500<br>3 450 | 4 400<br>450   | 21 600<br>2 200                | 6 000  | 8 000                  | 92<br>9.3  | 0.375                                 | 19.050 (3/4)                  |
| 22.2                        | 11.11          | 0.8            | 6               | 4 | 36.5 | 20 700<br>2 110  | 33 500<br>3 450 | 4 850<br>495   | 23 200<br>2 360                | 6 000  | 8 000                  | 92<br>9.3  | 0.420                                 | 19.050 (3/4)                  |
| 25.4                        | 12.7           | 0.8            | 8               | 5 | 42   | 28 900<br>2 950  | 55 000<br>5 600 | 5 300<br>540   | 31 000<br>3 150                | 5 000  | 6 600                  | 150<br>15  | 0.505                                 | 22.225 (7/8)                  |
| 25.4                        | 12.7           | 0.8            | 8               | 5 | 42   | 28 900<br>2 950  | 55 000<br>5 600 | 6 200<br>635   | 35 000<br>3 550                | 5 000  | 6 600                  | 150<br>15  | 0.750                                 | 22.225 (7/8)                  |

Note: The limiting speed of cam followers incorporating a seal (those marked with an asterisk) is approximately 10,000 rpm.  
備考※印シール有りの場合の許容回転速度はおおよそ10 000r/minである。

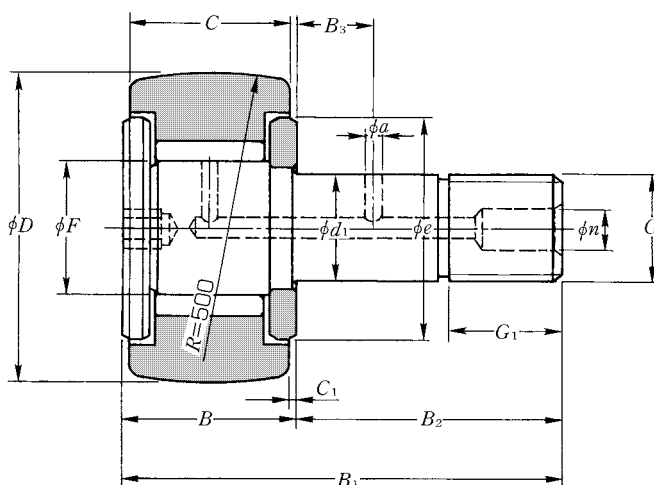
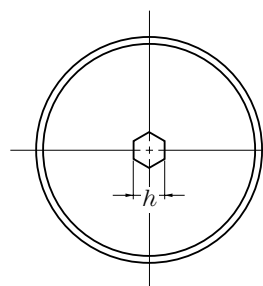
|                  |                        |                      |
|------------------|------------------------|----------------------|
| Metric series    | Inch series            |                      |
| With cage        | Full-complement roller |                      |
| Hexagonal socket | Tapped hole            | Slot for screwdriver |
| Without seal     | With seal              |                      |
| ミリ系              | インチ系                   |                      |
| 保持器付             | 総ころ                    |                      |
| 六角穴              | タップ穴                   | ドライバ溝                |
| シールなし            | シール付                   |                      |

## Full-Complement Roller-Type Cam Followers

総ころ形カムフォロア

CRV··H type  
 CRV··XH type  
 CRV··LLH type  
 CRV··XLLH type

CRV··H形  
 CRV··XH形  
 CRV··LLH形  
 CRV··XLLH形



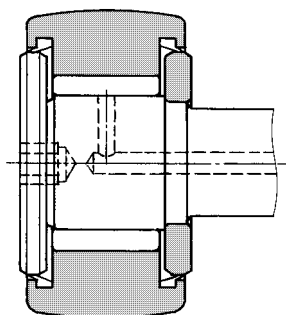
CRV··H type (Full-complement roller type)  
 CRV··H形 (総ころ形)

| OD <sup>1)</sup><br>外径<br>mm (in)<br>D<br>0<br>-0.05 | Cam Follower number<br>呼び番号   |                                 |                               |                                 | Dimensions<br>寸法<br>mm (in) |                   |       |      |                |                |             |
|--|-------------------------------|---------------------------------|-------------------------------|---------------------------------|-----------------------------|-------------------|-------|------|----------------|----------------|-------------|
|  | Without seal<br>シールなし         |                                 | With seal<br>シール有り            |                                 | $d_1 +_{0}^{0.025}$         | $C -_{0}^{0.130}$ | F     | B    | B <sub>1</sub> | B <sub>2</sub> | G           |
|  | Spherical outer rings<br>球面外輪 | Cylindrical outer rings<br>円筒外輪 | Spherical outer rings<br>球面外輪 | Cylindrical outer rings<br>円筒外輪 |                             |                   |       |      |                |                |             |
| 12.700 (1/2)   | CRV8H/3AS                     | CRV8XH/3AS                      | CRV8LLH/3AS                   | CRV8XLLH/3AS                    | 4.826 (-)                   | 8.731 (1/32)      | 5.75  | 10.3 | 23             | 12.7           | NO-10-32UNF |
| 12.700 (1/2)   | CRV8-1H/3AS                   | CRV8-1XH/3AS                    | CRV8-1LLH/3AS                 | CRV8-1XLLH/3AS                  | 4.826 (-)                   | 9.525 (3/8)       | 5.75  | 11.1 | 27             | 15.9           | NO-10-32UNF |
| 15.875 (5/8)   | CRV10H/3AS                    | CRV10XH/3AS                     | CRV10LLH/3AS                  | CRV10XLLH/3AS                   | 6.350 (1/4)                 | 10.319 (13/32)    | 8.11  | 11.9 | 27.8           | 15.9           | 1/4-28UNF   |
| 15.875 (5/8)   | CRV10-1H/3AS                  | CRV10-1XH/3AS                   | CRV10-1LLH/3AS                | CRV10-1XLLH/3AS                 | 6.350 (1/4)                 | 11.112 (7/16)     | 8.11  | 12.7 | 31.8           | 19.1           | 1/4-28UNF   |
| 19.050 (3/4)   | CRV12H/3AS                    | CRV12XH/3AS                     | CRV12LLH/3AS                  | CRV12XLLH/3AS                   | 9.525 (3/8)                 | 12.700 (1/2)      | 11    | 14.3 | 36.5           | 22.2           | 3/8-24UNF   |
| 22.225 (7/8)   | CRV14H/3AS                    | CRV14XH/3AS                     | CRV14LLH/3AS                  | CRV14XLLH/3AS                   | 9.525 (3/8)                 | 12.700 (1/2)      | 11    | 14.3 | 36.5           | 22.2           | 3/8-24UNF   |
| 25.400 (1)   | CRV16H/3AS                    | CRV16XH/3AS                     | CRV16LLH/3AS                  | CRV16XLLH/3AS                   | 11.112 (7/16)               | 15.875 (5/8)      | 14    | 17.6 | 43             | 25.4           | 7/16-20UNF  |
| 28.575 (1 1/8)                                       | CRV18H/3AS                    | CRV18XH/3AS                     | CRV18LLH/3AS                  | CRV18XLLH/3AS                   | 11.112 (7/16)               | 15.875 (5/8)      | 14    | 17.6 | 43             | 25.4           | 7/16-20UNF  |
| 31.750 (1 1/4)                                       | CRV20H/3AS                    | CRV20XH/3AS                     | CRV20LLH/3AS                  | CRV20XLLH/3AS                   | 12.700 (1/2)                | 19.050 (3/4)      | 18.47 | 20.6 | 52.4           | 31.8           | 1/2-20UNF   |
| 34.925 (1 3/8)                                       | CRV22H/3AS                    | CRV22XH/3AS                     | CRV22LLH/3AS                  | CRV22XLLH/3AS                   | 12.700 (1/2)                | 19.050 (3/4)      | 18.47 | 20.6 | 52.4           | 31.8           | 1/2-20UNF   |
| 38.100 (1 1/2)                                       | CRV24H/3AS                    | CRV24XH/3AS                     | CRV24LLH/3AS                  | CRV24XLLH/3AS                   | 15.875 (5/8)                | 22.225 (7/8)      | 21    | 23.8 | 61.9           | 38.1           | 5/8-18UNF   |
| 41.275 (1 5/8)                                       | CRV26H/3AS                    | CRV26XH/3AS                     | CRV26LLH/3AS                  | CRV26XLLH/3AS                   | 15.875 (5/8)                | 22.225 (7/8)      | 21    | 23.8 | 61.9           | 38.1           | 5/8-18UNF   |
| 44.450 (1 3/4)                                       | CRV28H/3AS                    | CRV28XH/3AS                     | CRV28LLH/3AS                  | CRV28XLLH/3AS                   | 19.050 (3/4)                | 25.400 (1)        | 24.65 | 26.9 | 71.4           | 44.5           | 3/4-16UNF   |
| 47.625 (1 7/8)                                       | CRV30H/3AS                    | CRV30XH/3AS                     | CRV30LLH/3AS                  | CRV30XLLH/3AS                   | 19.050 (3/4)                | 25.400 (1)        | 24.65 | 26.9 | 71.4           | 44.5           | 3/4-16UNF   |
| 50.800 (2)   | CRV32H/3AS                    | CRV32XH/3AS                     | CRV32LLH/3AS                  | CRV32XLLH/3AS                   | 22.225 (7/8)                | 31.750 (1 1/4)    | 26.71 | 33.3 | 84.1           | 50.8           | 7/8-14UNF   |
| 57.150 (2 1/4)                                       | CRV36H/3AS                    | CRV36XH/3AS                     | CRV36LLH/3AS                  | CRV36XLLH/3AS                   | 22.225 (7/8)                | 31.750 (1 1/4)    | 26.71 | 33.3 | 84.1           | 50.8           | 7/8-14UNF   |
| 63.500 (2 1/2)                                       | CRV40H/3AS                    | CRV40XH/3AS                     | CRV40LLH/3AS                  | CRV40XLLH/3AS                   | 25.400 (1)                  | 38.100 (1 1/2)    | 31.15 | 39.6 | 96.8           | 57.2           | 1-14UNF     |
| 69.850 (2 3/4)                                       | CRV44H/3AS                    | CRV44XH/3AS                     | CRV44LLH/3AS                  | CRV44XLLH/3AS                   | 25.400 (1)                  | 38.100 (1 1/2)    | 31.15 | 39.6 | 96.8           | 57.2           | 1-14UNF     |
| 76.200 (3)   | CRV48H/3AS                    | CRV48XH/3AS                     | CRV48LLH/3AS                  | CRV48XLLH/3AS                   | 31.750 (1 1/4)              | 44.450 (1 3/4)    | 36.85 | 46   | 109.5          | 63.5           | 1 1/4-12UNF |
| 82.550 (3 1/4)                                       | CRV52H/3AS                    | CRV52XH/3AS                     | CRV52LLH/3AS                  | CRV52XLLH/3AS                   | 31.750 (1 1/4)              | 44.450 (1 3/4)    | 36.85 | 46   | 109.5          | 63.5           | 1 1/4-12UNF |
| 88.900 (3 1/2)                                       | CRV56H/3AS                    | CRV56XH/3AS                     | CRV56LLH/3AS                  | CRV56XLLH/3AS                   | 34.925 (1 3/8)              | 50.800 (2)        | 44.5  | 52.3 | 122.2          | 69.9           | 1 3/8-12UNF |
| 101.600 (4)  | CRV64H/3AS                    | CRV64XH/3AS                     | CRV64LLH/3AS                  | CRV64XLLH/3AS                   | 38.100 (1 1/2)              | 57.150 (2 1/4)    | 44.5  | 58.7 | 147.6          | 88.9           | 1 1/2-12UNF |
| 127.000 (5)  | CRV80H/3AS                    | CRV80XH/3AS                     | CRV80LLH/3AS                  | CRV80XLLH/3AS                   | 50.800 (2)                  | 69.850 (2 3/4)    | 68.7  | 71.4 | 200            | 128.6          | 2-12UNF     |
| 152.400 (6)  | CRV96H/3AS                    | CRV96XH/3AS                     | CRV96LLH/3AS                  | CRV96XLLH/3AS                   | 63.500 (2 1/2)              | 82.550 (3 1/4)    | 81.35 | 84.2 | 236.6          | 152.4          | 2 1/2-12UNF |

Note: 1.  $-_{0.025}^0$  is the dimensional tolerance of the outside diameter D of the outer rings of the CRV··XH and CRV··XLLH types whose outside surface form is cylindrical.

注1) 外径面が円筒であるCRV··XH形、CRV··XLLH形の外輪外径Dの許容差は  $-_{0.025}^0$  である。





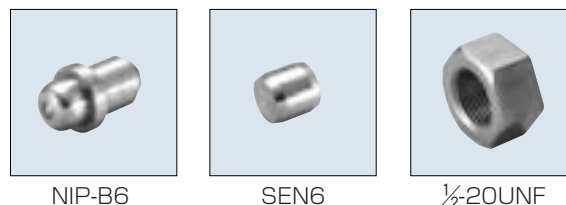
**CRV·LLH type**  
**(Full-complement roller type, with seal)**  
 CRV·LLH形 (総ころシール形)

Accessories / 付属部品

| Applicable bearing number<br>適用軸受呼び番号 | Grease nipple number<br>グリースニップル呼び番号 | Plug number<br>プラグ呼び番号 | Applicable hexagonal nut<br>適用六角ナット |
|---------------------------------------|--------------------------------------|------------------------|-------------------------------------|
| 8~10-1                                | —                                    | —                      | No.10-32UNF~ 1/4-28UNF              |
| 12~18                                 | NIP-B4                               | SEN4                   | 3/8-24UNF~7/16-20UNF                |
| 20~44                                 | NIP-B6                               | SEN6                   | 1/2-20UNF~ 1 -14UNF                 |
| 48~96                                 | NIP-B8                               | SEN8                   | 1 1/4-12UNF~2 1/2-12UNF             |

Note: The boundary dimensions of the grease nipples and plugs are listed in Table 3 on page 9 and Table 5 on page 10.

※グリースニップル及びプラグの主要寸法は9ページ表3、10ページ表5に示す。



NIP-B6

SEN6

1/2-20UNF

| Dimensions<br>寸法<br>mm |                |                |   |   |      |      | Basic load ratings<br>dynamic static<br>基本動 N 基本静<br>定格荷重 kgf 定格荷重 |                   | Track load capacity<br>トラック荷容量<br>N |                                   | Limiting speed<br>許容回転速度<br>r/min |                           | Maximum<br>tightening<br>torque<br>締付最大トルク<br>N·m<br>kgf·m | Mass<br>質量<br>kg<br>(approx.)<br>(参考) | Stud dia.<br>スタッド径<br>mm (in) |
|------------------------|----------------|----------------|---|---|------|------|--|-------------------|-------------------------------------|-----------------------------------|-----------------------------------|---------------------------|--|---------------------------------------|-------------------------------|
| G <sub>1</sub>         | B <sub>3</sub> | C <sub>1</sub> | n | a | e    | in   | C <sub>r</sub>   | C <sub>or</sub>   | Spherical<br>outer ring<br>球面外輪     | Cylindrical<br>outer ring<br>円筒外輪 | Grease<br>lubrication<br>グリース潤滑   | Oil<br>lubrication<br>油潤滑 |  |                                       |                               |
| 6.4                    | —              | 0.8            | — | — | 10   | 1/8  | 3 400<br>350   | 3 750<br>385      | 790<br>81                           | 2 090<br>213                      | *17 000                           | *22 000                   | 2<br>0.2   | 0.010                                 | 4.826 (—)                     |
| 6.4                    | —              | 0.8            | — | — | 10   | 1/8  | 3 400<br>350   | 3 750<br>385      | 790<br>81                           | 2 310<br>235                      | *17 000                           | *22 000                   | 2<br>0.2   | 0.011                                 | 4.826 (—)                     |
| 7.9                    | —              | 0.8            | — | — | 12.5 | 1/8  | 5 550<br>565   | 7 600<br>770      | 1 080<br>110                        | 3 000<br>310                      | *12 000                           | *15 000                   | 4<br>0.4   | 0.020                                 | 6.350 (1/4)                   |
| 7.9                    | —              | 0.8            | — | — | 12.5 | 1/8  | 6 200<br>630   | 8 700<br>885      | 1 080<br>110                        | 3 300<br>335                      | *12 000                           | *15 000                   | 4<br>0.4   | 0.022                                 | 6.350 (1/4)                   |
| 9.5                    | 6.35           | 0.8            | 4 | 3 | 15.5 | 3/16 | 8 050<br>825   | 13 300<br>1 360   | 1 380<br>140                        | 4 600<br>470                      | 9 000                             | *11 000                   | 13<br>1.3  | 0.038                                 | 9.525 (3/8)                   |
| 9.5                    | 6.35           | 0.8            | 4 | 3 | 15.5 | 3/16 | 8 050<br>825   | 13 300<br>1 360   | 1 710<br>174                        | 5 350<br>545                      | 9 000                             | *11 000                   | 13<br>1.3  | 0.048                                 | 9.525 (3/8)                   |
| 12.7                   | 6.35           | 0.8            | 4 | 3 | 19.5 | 1/4  | 11 700<br>1 190  | 18 900<br>1 920   | 2 060<br>210                        | 7 400<br>755                      | 7 100                             | 9 200                     | 18<br>1.9  | 0.080                                 | 11.112 (7/16)                 |
| 12.7                   | 6.35           | 0.8            | 4 | 3 | 19.5 | 1/4  | 11 700<br>1 190  | 18 900<br>1 920   | 2 430<br>248                        | 8 350<br>850                      | 7 100                             | 9 200                     | 18<br>1.9  | 0.096                                 | 11.112 (7/16)                 |
| 15.9                   | 7.94           | 0.8            | 6 | 3 | 25   | 1/4  | 17 700<br>1 810  | 35 000<br>3 600   | 2 840<br>290                        | 11 400<br>1 160                   | 5 400                             | 7 000                     | 24<br>2.4  | 0.140                                 | 12.700 (1/2)                  |
| 15.9                   | 7.94           | 0.8            | 6 | 3 | 25   | 1/4  | 17 700<br>1 810  | 35 000<br>3 600   | 3 250<br>330                        | 12 500<br>1 280                   | 5 400                             | 7 000                     | 24<br>2.4  | 0.165                                 | 12.700 (1/2)                  |
| 19.1                   | 9.53           | 0.8            | 6 | 4 | 27   | 5/16 | 21 100<br>2 150  | 45 500<br>4 650   | 3 600<br>365                        | 16 300<br>1 660                   | 4 800                             | 6 200                     | 51<br>5.2  | 0.240                                 | 15.875 (5/8)                  |
| 19.1                   | 9.53           | 0.8            | 6 | 4 | 27   | 5/16 | 21 100<br>2 150  | 45 500<br>4 650   | 4 050<br>410                        | 17 600<br>1 800                   | 4 800                             | 6 200                     | 51<br>5.2  | 0.280                                 | 15.875 (5/8)                  |
| 22.2                   | 11.11          | 0.8            | 6 | 4 | 36.5 | 5/16 | 28 400<br>2 900  | 60 500<br>6 150   | 4 400<br>450                        | 21 600<br>2 200                   | 4 100                             | 5 300                     | 92<br>9.3  | 0.400                                 | 19.050 (3/4)                  |
| 22.2                   | 11.11          | 0.8            | 6 | 4 | 36.5 | 5/16 | 28 400<br>2 900  | 60 500<br>6 150   | 4 850<br>495                        | 23 200<br>2 360                   | 4 100                             | 5 300                     | 92<br>9.3  | 0.440                                 | 19.050 (3/4)                  |
| 25.4                   | 12.7           | 0.8            | 6 | 5 | 36.5 | 7/16 | 41 000<br>4 200  | 87 500<br>8 950   | 5 300<br>540                        | 31 000<br>3 150                   | 3 700                             | 4 800                     | 150<br>15  | 0.650                                 | 22.225 (7/8)                  |
| 25.4                   | 12.7           | 0.8            | 6 | 5 | 36.5 | 7/16 | 41 000<br>4 200  | 87 500<br>8 950   | 6 200<br>635                        | 35 000<br>3 550                   | 3 700                             | 4 800                     | 150<br>15  | 0.780                                 | 22.225 (7/8)                  |
| 28.6                   | 14.29          | 0.8            | 6 | 5 | 44   | 1/2  | 54 500<br>5 600  | 119 000<br>12 200 | 7 200<br>735                        | 44 500<br>4 550                   | 3 200                             | 4 100                     | 230<br>23  | 1.20                                  | 25.400 (1)                    |
| 28.6                   | 14.29          | 0.8            | 6 | 5 | 44   | 1/2  | 54 500<br>5 600  | 119 000<br>12 200 | 8 250<br>840                        | 49 000<br>5 000                   | 3 200                             | 4 100                     | 230<br>23  | 1.34                                  | 25.400 (1)                    |
| 31.8                   | 15.88          | 0.8            | 8 | 5 | 53   | 5/8  | 76 500<br>7 800  | 177 000<br>18 000 | 9 150<br>935                        | 64 000<br>6 500                   | 2 700                             | 3 500                     | 435<br>45  | 1.92                                  | 31.750 (1 1/4)                |
| 31.8                   | 15.88          | 0.8            | 8 | 5 | 53   | 5/8  | 76 500<br>7 800  | 177 000<br>18 000 | 10 000<br>1 020                     | 69 000<br>7 050                   | 2 700                             | 3 500                     | 435<br>45  | 2.20                                  | 31.750 (1 1/4)                |
| 34.9                   | 17.46          | 0.8            | 8 | 5 | 60   | 5/8  | 84 500<br>8 650  | 214 000<br>21 800 | 11 100<br>1 130                     | 86 500<br>8 800                   | 2 200                             | 2 800                     | 580<br>60  | 2.92                                  | 34.925 (1 3/8)                |
| 38.1                   | 19.05          | 0.8            | 8 | 5 | 63   | 3/4  | 106 000<br>10 800  | 244 000<br>24 900 | 13 200<br>1 350                     | 113 000<br>11 500                 | 2 200                             | 2 800                     | 760<br>78  | 4.32                                  | 38.100 (1 1/2)                |
| 65.1                   | 22.23          | 0.8            | 8 | 5 | 89   | 7/8  | 189 000<br>19 300  | 520 000<br>53 000 | 17 900<br>1 830                     | 165 000<br>16 900                 | 1 500                             | 1 900                     | 1 820<br>190   | 8.80                                  | 50.800 (2)                    |
| 76.2                   | 25.4           | 0.8            | 8 | 5 | 110  | 1    | 260 000<br>26 500  | 675 000<br>68 500 | 22 100<br>2 250                     | 240 000<br>24 400                 | 1 200                             | 1 500                     | 3 550<br>360   | 15.3                                  | 63.500 (2 1/2)                |

Note: The limiting speed of cam followers incorporating a seal (those marked with an asterisk) is approximately 10,000 rpm.  
 備考※印シール有りの場合の許容回転速度はおおよそ10 000r/minである。

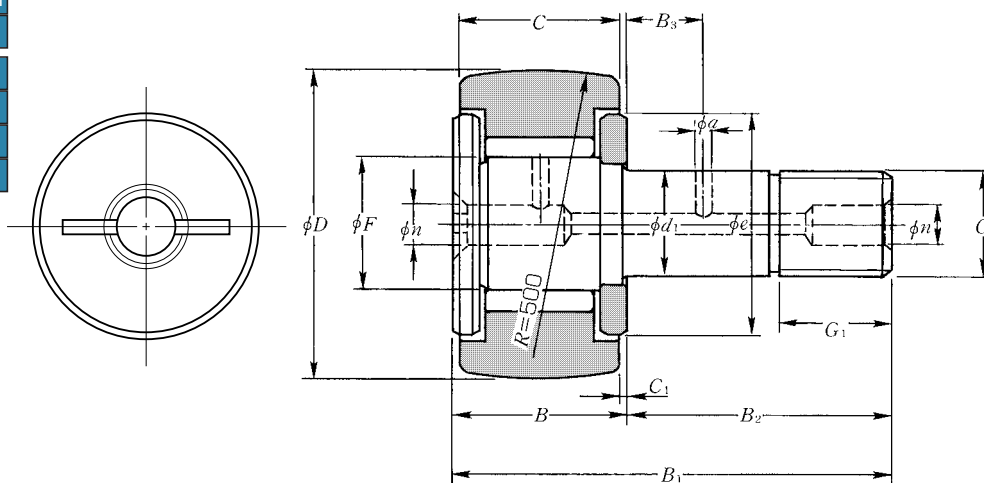
|                  |                        |                      |
|------------------|------------------------|----------------------|
| Metric series    | Inch series            |                      |
| With cage        | Full-complement roller |                      |
| Hexagonal socket | Tapped hole            | Slot for screwdriver |
| Without seal     | With seal              |                      |
| ミリ系              | インチ系                   |                      |
| 保持器付             | 総ころ                    |                      |
| 六角穴              | タップ穴                   | ドライバ溝                |
| シールなし            | シール付                   |                      |

# Full-Complement Roller-Type Cam Followers

総ころ形カムフォロア

CRV type  
 CRV··X type  
 CRV··LL type  
 CRV··XLL type

CRV形  
 CRV··X形  
 CRV··LL形  
 CRV··XLL形

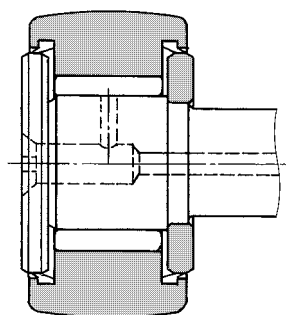


CRV type (Full-complement roller type)  
 CRV形 (総ころ形)

| OD <sup>1)</sup><br>外径<br>mm (in)<br>D<br>0<br>-0.05 | Cam Follower number<br>呼び番号   |                                 |                               |                                 | Dimensions<br>寸法<br>mm (in) |                |       |      |                |                |             |
|--|-------------------------------|---------------------------------|-------------------------------|---------------------------------|-----------------------------|----------------|-------|------|----------------|----------------|-------------|
|  | Without seal<br>シールなし         |                                 | With seal<br>シール有り            |                                 | $d_1^{+0.025}_0$            | $C_{-0.130}^0$ | F     | B    | B <sub>1</sub> | B <sub>2</sub> | G           |
|  | Spherical outer rings<br>球面外輪 | Cylindrical outer rings<br>円筒外輪 | Spherical outer rings<br>球面外輪 | Cylindrical outer rings<br>円筒外輪 |                             |                |       |      |                |                |             |
| 12.700 (1/2)   | CRV8/3AS                      | CRV8X/3AS                       | CRV8LL/3AS                    | CRV8XLL/3AS                     | 4.826 (-)                   | 8.731 (1 1/32) | 5.75  | 10.3 | 23             | 12.7           | NO-10-32UNF |
| 12.700 (1/2)   | CRV8-1/3AS                    | CRV8-1X/3AS                     | CRV8-1LL/3AS                  | CRV8-1XLL/3AS                   | 4.826 (-)                   | 9.525 (3/8)    | 5.75  | 11.1 | 27             | 15.9           | NO-10-32UNF |
| 15.875 (5/8)   | CRV10/3AS                     | CRV10X/3AS                      | CRV10LL/3AS                   | CRV10XLL/3AS                    | 6.350 (1/4)                 | 10.319 (13/32) | 8.11  | 11.9 | 27.8           | 15.9           | 1/4-28UNF   |
| 15.875 (5/8)   | CRV10-1/3AS                   | CRV10-1X/3AS                    | CRV10-1LL/3AS                 | CRV10-1XLL/3AS                  | 6.350 (1/4)                 | 11.112 (7/16)  | 8.11  | 12.7 | 31.8           | 19.1           | 1/4-28UNF   |
| 19.050 (3/4)   | CRV12/3AS                     | CRV12X/3AS                      | CRV12LL/3AS                   | CRV12XLL/3AS                    | 9.525 (3/8)                 | 12.700 (1/2)   | 11    | 14.3 | 36.5           | 22.2           | 3/8-24UNF   |
| 22.225 (7/8)   | CRV14/3AS                     | CRV14X/3AS                      | CRV14LL/3AS                   | CRV14XLL/3AS                    | 9.525 (3/8)                 | 12.700 (1/2)   | 11    | 14.3 | 36.5           | 22.2           | 3/8-24UNF   |
| 25.400 (1)   | CRV16/3AS                     | CRV16X/3AS                      | CRV16LL/3AS                   | CRV16XLL/3AS                    | 11.112 (7/16)               | 15.875 (5/8)   | 14    | 17.6 | 43             | 25.4           | 7/16-20UNF  |
| 28.575 (1 1/8)                                       | CRV18/3AS                     | CRV18X/3AS                      | CRV18LL/3AS                   | CRV18XLL/3AS                    | 11.112 (7/16)               | 15.875 (5/8)   | 14    | 17.6 | 43             | 25.4           | 7/16-20UNF  |
| 31.750 (1 1/4)                                       | CRV20/3AS                     | CRV20X/3AS                      | CRV20LL/3AS                   | CRV20XLL/3AS                    | 12.700 (1/2)                | 19.050 (3/4)   | 18.47 | 20.6 | 52.4           | 31.8           | 1/2-20UNF   |
| 34.925 (1 3/8)                                       | CRV22/3AS                     | CRV22X/3AS                      | CRV22LL/3AS                   | CRV22XLL/3AS                    | 12.700 (1/2)                | 19.050 (3/4)   | 18.47 | 20.6 | 52.4           | 31.8           | 1/2-20UNF   |
| 38.100 (1 1/2)                                       | CRV24/3AS                     | CRV24X/3AS                      | CRV24LL/3AS                   | CRV24XLL/3AS                    | 15.875 (5/8)                | 22.225 (7/8)   | 21    | 23.8 | 61.9           | 38.1           | 5/8-18UNF   |
| 41.275 (1 5/8)                                       | CRV26/3AS                     | CRV26X/3AS                      | CRV26LL/3AS                   | CRV26XLL/3AS                    | 15.875 (5/8)                | 22.225 (7/8)   | 21    | 23.8 | 61.9           | 38.1           | 5/8-18UNF   |
| 44.450 (1 3/4)                                       | CRV28/3AS                     | CRV28X/3AS                      | CRV28LL/3AS                   | CRV28XLL/3AS                    | 19.050 (3/4)                | 25.400 (1)     | 24.65 | 26.9 | 71.4           | 44.5           | 3/4-16UNF   |
| 47.625 (1 7/8)                                       | CRV30/3AS                     | CRV30X/3AS                      | CRV30LL/3AS                   | CRV30XLL/3AS                    | 19.050 (3/4)                | 25.400 (1)     | 24.65 | 26.9 | 71.4           | 44.5           | 3/4-16UNF   |
| 50.800 (2)   | CRV32/3AS                     | CRV32X/3AS                      | CRV32LL/3AS                   | CRV32XLL/3AS                    | 22.225 (7/8)                | 31.750 (1 1/4) | 26.71 | 33.3 | 84.1           | 50.8           | 7/8-14UNF   |
| 57.150 (2 1/4)                                       | CRV36/3AS                     | CRV36X/3AS                      | CRV36LL/3AS                   | CRV36XLL/3AS                    | 22.225 (7/8)                | 31.750 (1 1/4) | 26.71 | 33.3 | 84.1           | 50.8           | 7/8-14UNF   |
| 63.500 (2 1/2)                                       | CRV40/3AS                     | CRV40X/3AS                      | CRV40LL/3AS                   | CRV40XLL/3AS                    | 25.400 (1)                  | 38.100 (1 1/2) | 31.15 | 39.6 | 96.8           | 57.2           | 1-14UNF     |
| 69.850 (2 3/4)                                       | CRV44/3AS                     | CRV44X/3AS                      | CRV44LL/3AS                   | CRV44XLL/3AS                    | 25.400 (1)                  | 38.100 (1 1/2) | 31.15 | 39.6 | 96.8           | 57.2           | 1-14UNF     |
| 76.200 (3)   | CRV48/3AS                     | CRV48X/3AS                      | CRV48LL/3AS                   | CRV48XLL/3AS                    | 31.750 (1 1/4)              | 44.450 (1 3/4) | 36.85 | 46   | 109.5          | 63.5           | 1 1/4-12UNF |
| 82.550 (3 1/4)                                       | CRV52/3AS                     | CRV52X/3AS                      | CRV52LL/3AS                   | CRV52XLL/3AS                    | 31.750 (1 1/4)              | 44.450 (1 3/4) | 36.85 | 46   | 109.5          | 63.5           | 1 1/4-12UNF |
| 88.900 (3 1/2)                                       | CRV56/3AS                     | CRV56X/3AS                      | CRV56LL/3AS                   | CRV56XLL/3AS                    | 34.925 (1 3/8)              | 50.800 (2)     | 44.5  | 52.3 | 122.2          | 69.9           | 1 3/8-12UNF |
| 101.600 (4)  | CRV64/3AS                     | CRV64X/3AS                      | CRV64LL/3AS                   | CRV64XLL/3AS                    | 38.100 (1 1/2)              | 57.150 (2 1/4) | 44.5  | 58.7 | 147.6          | 88.9           | 1 1/2-12UNF |
| 127.000 (5)  | CRV80/3AS                     | CRV80X/3AS                      | CRV80LL/3AS                   | CRV80XLL/3AS                    | 50.800 (2)                  | 69.850 (2 3/4) | 68.7  | 71.4 | 200            | 128.6          | 2-12UNF     |
| 152.400 (6)  | CRV96/3AS                     | CRV96X/3AS                      | CRV96LL/3AS                   | CRV96XLL/3AS                    | 63.500 (2 1/2)              | 82.550 (3 1/4) | 81.35 | 84.2 | 236.6          | 152.4          | 2 1/2-12UNF |

Notes: 1.  $_{-0.025}^0$  is the dimensional tolerance of the outside diameter D of the outer rings of the CRV··X and CRV··XLL types whose outside surface form is cylindrical.  
 2. The grease port is situated only in the front (in the left side face in the diagram above).

注1) 外径面が円筒であるCRV··X形、CRV··XLL形の外輪外径Dの許容差は $_{-0.025}^0$ である。  
 2) グリースの補給穴は正面(上図左側面)にだけ設けている。



**CRV··LL type**  
**(Full-complement roller type, with seal)**  
CRV··LL形 (総ころシール形)

Accessories / 付属部品

| Applicable bearing number<br>適用軸受呼び番号 | Grease nipple number<br>グリースニップル呼び番号 | Plug number<br>プラグ呼び番号 | Applicable hexagonal nut<br>適用六角ナット |
|---------------------------------------|--------------------------------------|------------------------|-------------------------------------|
| 8,8-1                                 | NIP-B3                               | SEN3                   | No.10-32UNF                         |
| 10~18                                 | NIP-B4                               | SEN4                   | 1/4-28UNF~1/16-20UNF                |
| 20~44                                 | NIP-B6                               | SEN6                   | 1/2-20UNF~1-14UNF                   |
| 48~96                                 | NIP-B8                               | SEN8                   | 1 1/4-12UNF~2 1/2-12UNF             |

Note: The boundary dimensions of the grease nipples and plugs are listed in **Table 3** on page 9 and **Table 5** on page 10.

※グリースニップル及びプラグの主要寸法は9ページ表3、10ページ表5に示す。



NIP-B6

SEN6

1/2-20UNF

| Dimensions<br>寸法<br>mm (in) |                |                |                 |   |      | Basic load ratings<br>dynamic static<br>基本動 N 基本静<br>定格荷重 kgf 定格荷重 |                   | Track load capacity<br>トラック荷容量<br>N    |  | Limiting speed<br>許容回転速度<br>r/min |                           | Maximum<br>tightening<br>torque<br>締付最大トルク<br>N·m<br>kgf·m | Mass<br>質量<br>kg<br>(approx.)<br>(参考) | Stud dia.<br>スタッド径<br>mm (in) |
|-----------------------------|----------------|----------------|-----------------|---|------|--|-------------------|--|--|-----------------------------------|---------------------------|--|---------------------------------------|-------------------------------|
| G <sub>1</sub>              | B <sub>3</sub> | C <sub>1</sub> | n               | a | e    | C <sub>r</sub>   | C <sub>or</sub>   | Spherical<br>outer ring<br>球面外輪<br>kgf | Cylindrical<br>outer ring<br>円筒外輪<br>kgf | Grease<br>lubrication<br>グリース潤滑   | Oil<br>lubrication<br>油潤滑 |  |                                       |                               |
| 6.4                         | —              | 0.8            | 3 <sup>2)</sup> | — | 10   | 3 400<br>350   | 3 750<br>385      | 790<br>81                              | 2 090<br>213                             | *17 000                           | *22 000                   | 2<br>0.2   | 0.010                                 | 4.826 (—)                     |
| 6.4                         | —              | 0.8            | 3 <sup>2)</sup> | — | 10   | 3 400<br>350   | 3 750<br>385      | 790<br>81                              | 2 310<br>235                             | *17 000                           | *22 000                   | 2<br>0.2   | 0.011                                 | 4.826 (—)                     |
| 7.9                         | —              | 0.8            | 4 <sup>2)</sup> | — | 12.5 | 5 550<br>565   | 7 600<br>770      | 1 080<br>110                           | 3 000<br>310                             | *12 000                           | *15 000                   | 4<br>0.4   | 0.020                                 | 6.350 (1/4)                   |
| 7.9                         | —              | 0.8            | 4 <sup>2)</sup> | — | 12.5 | 6 200<br>630   | 8 700<br>885      | 1 080<br>110                           | 3 300<br>335                             | *12 000                           | *15 000                   | 4<br>0.4   | 0.022                                 | 6.350 (1/4)                   |
| 9.5                         | 6.35           | 0.8            | 4               | 3 | 15.5 | 8 050<br>825   | 13 300<br>1 360   | 1 380<br>140                           | 4 600<br>470                             | 9 000                             | *11 000                   | 13<br>1.3  | 0.038                                 | 9.525 (3/8)                   |
| 9.5                         | 6.35           | 0.8            | 4               | 3 | 15.5 | 8 050<br>825   | 13 300<br>1 360   | 1 710<br>174                           | 5 350<br>545                             | 9 000                             | *11 000                   | 13<br>1.3  | 0.048                                 | 9.525 (3/8)                   |
| 12.7                        | 6.35           | 0.8            | 4               | 3 | 19.5 | 11 700<br>1 190  | 18 900<br>1 920   | 2 060<br>210                           | 7 400<br>755                             | 7 100                             | 9 200                     | 18<br>1.9  | 0.080                                 | 11.112 (7/16)                 |
| 12.7                        | 6.35           | 0.8            | 4               | 3 | 19.5 | 11 700<br>1 190  | 18 900<br>1 920   | 2 430<br>248                           | 8 350<br>850                             | 7 100                             | 9 200                     | 18<br>1.9  | 0.096                                 | 11.112 (7/16)                 |
| 15.9                        | 7.94           | 0.8            | 6               | 3 | 25   | 17 700<br>1 810  | 35 000<br>3 600   | 2 840<br>290                           | 11 400<br>1 160                          | 5 400                             | 7 000                     | 24<br>2.4  | 0.140                                 | 12.700 (1/2)                  |
| 15.9                        | 7.94           | 0.8            | 6               | 3 | 25   | 17 700<br>1 810  | 35 000<br>3 600   | 3 250<br>330                           | 12 500<br>1 280                          | 5 400                             | 7 000                     | 24<br>2.4  | 0.165                                 | 12.700 (1/2)                  |
| 19.1                        | 9.53           | 0.8            | 6               | 4 | 27   | 21 100<br>2 150  | 45 500<br>4 650   | 3 600<br>365                           | 16 300<br>1 660                          | 4 800                             | 6 200                     | 51<br>5.2  | 0.240                                 | 15.875 (5/8)                  |
| 19.1                        | 9.53           | 0.8            | 6               | 4 | 27   | 21 100<br>2 150  | 45 500<br>4 650   | 4 050<br>410                           | 17 600<br>1 800                          | 4 800                             | 6 200                     | 51<br>5.2  | 0.280                                 | 15.875 (5/8)                  |
| 22.2                        | 11.11          | 0.8            | 6               | 4 | 36.5 | 28 400<br>2 900  | 60 500<br>6 150   | 4 400<br>450                           | 21 600<br>2 200                          | 4 100                             | 5 300                     | 92<br>9.3  | 0.400                                 | 19.050 (3/4)                  |
| 22.2                        | 11.11          | 0.8            | 6               | 4 | 36.5 | 28 400<br>2 900  | 60 500<br>6 150   | 4 850<br>495                           | 23 200<br>2 360                          | 4 100                             | 5 300                     | 92<br>9.3  | 0.440                                 | 19.050 (3/4)                  |
| 25.4                        | 12.7           | 0.8            | 6               | 5 | 36.5 | 41 000<br>4 200  | 87 500<br>8 950   | 5 300<br>540                           | 31 000<br>3 150                          | 3 700                             | 4 800                     | 150<br>15  | 0.650                                 | 22.225 (7/8)                  |
| 25.4                        | 12.7           | 0.8            | 6               | 5 | 36.5 | 41 000<br>4 200  | 87 500<br>8 950   | 6 200<br>635                           | 35 000<br>3 550                          | 3 700                             | 4 800                     | 150<br>15  | 0.780                                 | 22.225 (7/8)                  |
| 28.6                        | 14.29          | 0.8            | 6               | 5 | 44   | 54 500<br>5 600  | 119 000<br>12 200 | 7 200<br>735                           | 44 500<br>4 550                          | 3 200                             | 4 100                     | 230<br>23  | 1.20                                  | 25.400 (1)                    |
| 28.6                        | 14.29          | 0.8            | 6               | 5 | 44   | 54 500<br>5 600  | 119 000<br>12 200 | 8 250<br>840                           | 49 000<br>5 000                          | 3 200                             | 4 100                     | 230<br>23  | 1.34                                  | 25.400 (1)                    |
| 31.8                        | 15.88          | 0.8            | 8               | 5 | 53   | 76 500<br>7 800  | 177 000<br>18 000 | 9 150<br>935                           | 64 000<br>6 500                          | 2 700                             | 3 500                     | 435<br>45  | 1.92                                  | 31.750 (1 1/4)                |
| 31.8                        | 15.88          | 0.8            | 8               | 5 | 53   | 76 500<br>7 800  | 177 000<br>18 000 | 10 000<br>1 020                        | 69 000<br>7 050                          | 2 700                             | 3 500                     | 435<br>45  | 2.20                                  | 31.750 (1 1/4)                |
| 34.9                        | 17.46          | 0.8            | 8               | 5 | 60   | 84 500<br>8 650  | 214 000<br>21 800 | 11 100<br>1 130                        | 86 500<br>8 800                          | 2 200                             | 2 800                     | 580<br>60  | 2.92                                  | 34.925 (1 3/8)                |
| 38.1                        | 19.05          | 0.8            | 8               | 5 | 63   | 106 000<br>10 800  | 244 000<br>24 900 | 13 200<br>1 350                        | 113 000<br>11 500                        | 2 200                             | 2 800                     | 760<br>78  | 4.32                                  | 38.100 (1 1/2)                |
| 65.1                        | 22.23          | 0.8            | 8               | 5 | 89   | 189 000<br>19 300  | 520 000<br>53 000 | 17 900<br>1 830                        | 165 000<br>16 900                        | 1 500                             | 1 900                     | 1 820<br>190   | 8.80                                  | 50.800 (2)                    |
| 76.2                        | 25.4           | 0.8            | 8               | 5 | 110  | 260 000<br>26 500  | 675 000<br>68 500 | 22 100<br>2 250                        | 240 000<br>24 400                        | 1 200                             | 1 500                     | 3 550<br>360   | 15.3                                  | 63.500 (2 1/2)                |

Note: The limiting speed of cam followers incorporating a seal (those marked with an asterisk) is approximately 10,000 rpm.

備考※印シール有りの場合の許容回転速度はおおよそ10 000r/minである。